



# INSTALLATION MANUAL

**69654C**

## Level of Difficulty

Easy

Installation difficulty levels are based on time and effort involved and may vary depending on the installer level of expertise, condition of the vehicle and proper tools and equipment.

## Weight Carrying Capacity

Gross trailer weight (GTW) 4,000 lbs.

Tongue weight (TW) 600 lbs.

## Parts List

Item	Qty	Description
1	6	Hex bolt, M12-1.25 x 40mm, CL8.8
2	6	Conical-toothed washer, 1/2"

## Tools Required

Paint marker	Socket extension, 6"
Exhaust hanger removal tool	Torque wrench
Ratchet	Tape measure
Shears	Trim panel pry tool
Socket, 3/4"	--

## ⚠ WARNING

Never exceed the vehicle manufacturer's recommended towing capacity.

## Product Photo



## NOTICE

Before you begin installation, read all instructions thoroughly.

Proper tools will improve the quality of installation and reduce the time required.

This installation requires:

- Lowering of the exhaust
- Part trimming

Periodic inspection of the trailer hitch should be performed to ensure all mounting hardware remains tight and structural components are secure.

To help prevent damage to the product or vehicle, refer to the specified torque specifications when securing hardware during the installation process.

## Warranty Information

Our products are backed by industry-leading warranties. For a copy of the product warranties or to provide feedback, please contact our support line using the phone number at the bottom of this document.

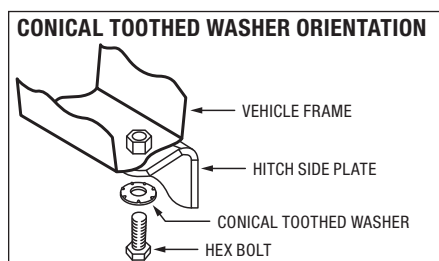
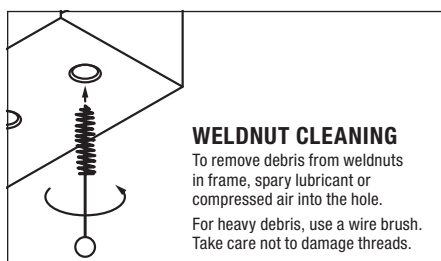
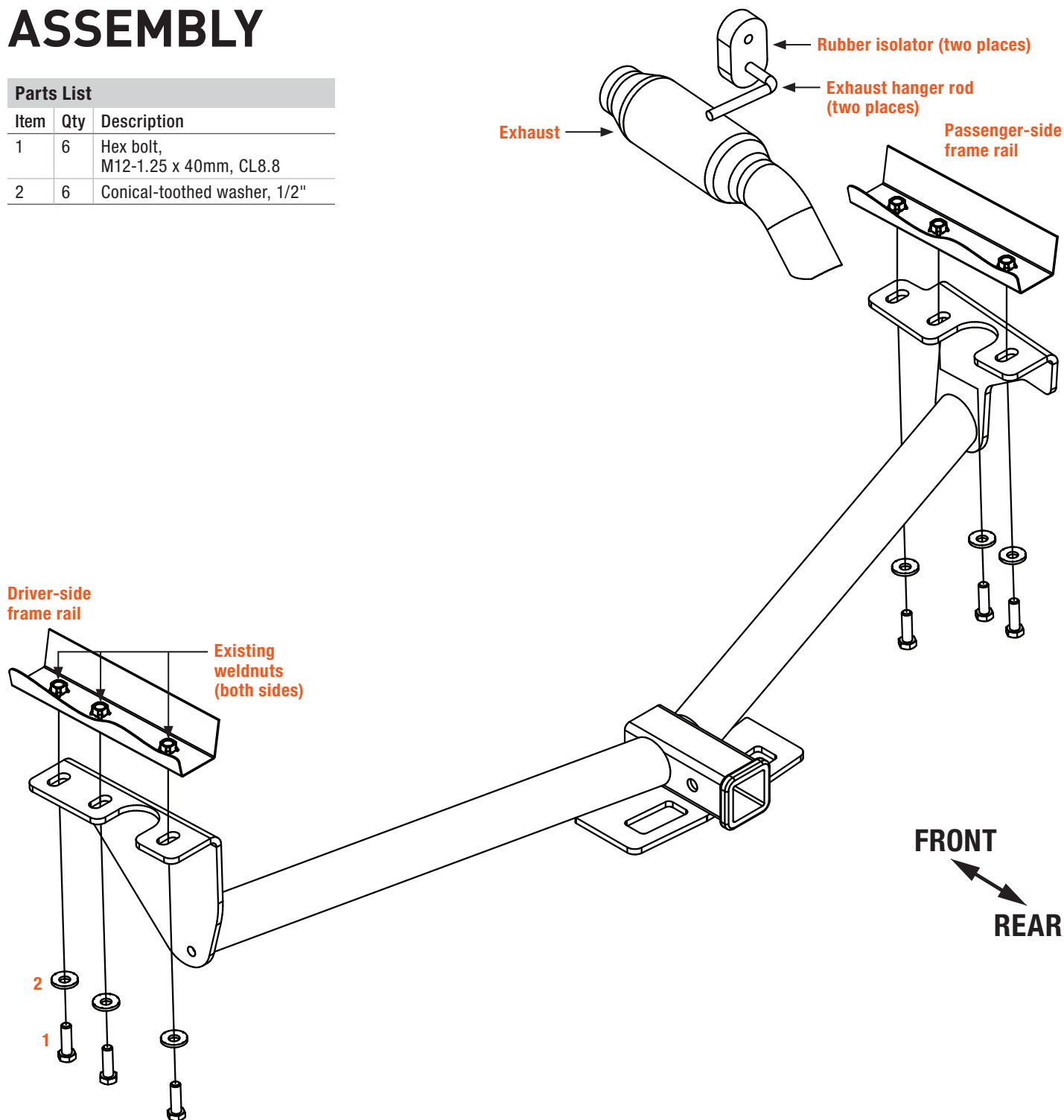
## SAFETY INSTRUCTIONS

Safety glasses should be worn at all times while installing this product.

# ASSEMBLY

## Parts List

Item	Qty	Description
1	6	Hex bolt, M12-1.25 x 40mm, CL8.8
2	6	Conical-toothed washer, 1/2"



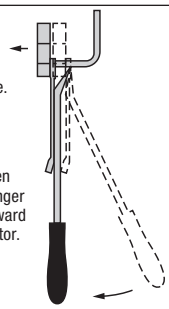
## RUBBER ISOLATOR REMOVAL DIAGRAM

This technique can be used if exhaust hanger removal pliers are not available.

Using a 5/8" open end wrench, slide the wrench up to the rubber isolator, cradling the hanger rod as shown.

Place the flat edge of a pry bar between the wrench and the hanger stop or hanger rod. Then simply rotate the pry bar toward the wrench to remove the rubber isolator.

**Note:** Using a lubricant or soapy water on the hanger rod and the rubber isolator helps removal.



### Step 1

Remove the plastic cover on the driver side by removing the six plastic clips securing it in place.

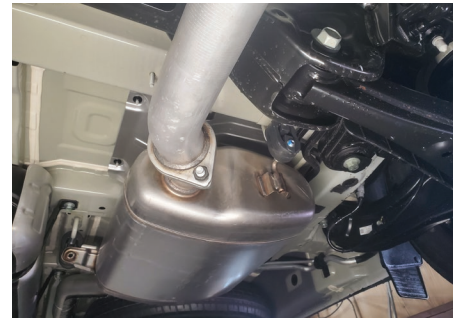
Set the plastic cover and five of the plastic clips aside for reinstallation in Step 6. Return one of the clips to the owner.



### Step 2

Lower the exhaust by removing the two rearmost rubber isolators from the exhaust hanger rods. Use a stand to support the exhaust and prevent any damage.

The exhaust will be reinstalled in Step 6.



### Step 3

Raise the trailer hitch into position by sliding the passenger side of the hitch over the exhaust first. Align the three holes in the hitch with the three weldnuts in the bottom of both driver- and passenger-side frame rails.

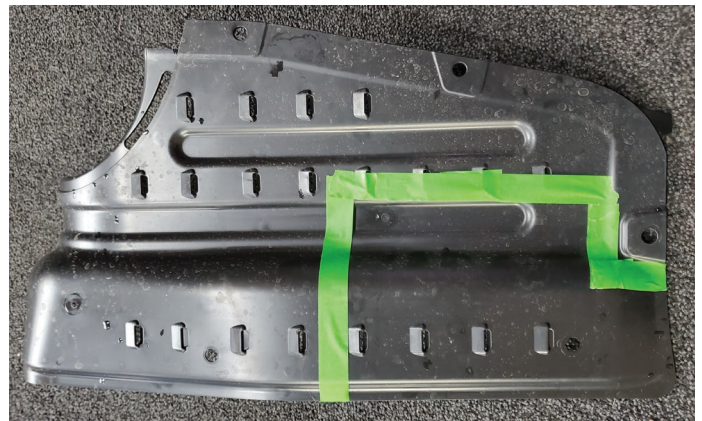
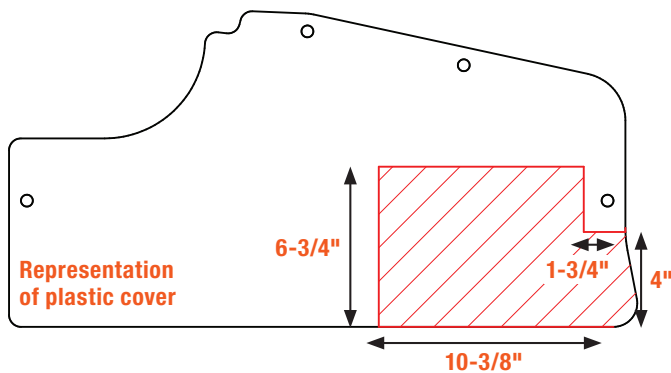
Loosely install three hex bolts (#1) and three conical washers (#2) into the hitch holes and weld nuts on both sides.

Torque all M12 fasteners to 60 ft-lbs.



### Step 4

Trim the plastic cover using the dimensions shown.



### Step 5

Inspect the hitch and the bumper fascia tab on the passenger side near the exhaust to make sure there is adequate clearance. If additional clearance is needed between hitch and bumper fascia tab, trim bumper fascia tab as needed.





### Step 6

Reinstall the plastic cover and exhaust removed in Steps 1 and 2.



### Final Installed Image

